

Instructions for use: DONIA 5.0



www.donia.fr



DONIA

ENJOY & PROTECT THE SEA TOGETHER

ANDROMÈDE
Océanologie

agence
de l'eau
RHÔNE-MÉDITERRANÉE
CORSE
établissement public de l'Etat

INSTITUT
ESTHERM
PARIS



SAFETY

ANCHOR ALERTS
LOCAL REGULATION
AIS POSITIONS OF BIG VESSELS



ENVIRONMENT

ASSISTANCE WITH ANCHORING
OUTSIDE OF SEAGRASS BEDS
USER OBSERVATIONS



MAPS

NAUTICAL CHARTS
SEABED MAPS (SEAGRASS,
ROCKS, SAND)
HARBOURS AND MOORING



BATHYMETRY

MORPHO-
BATHYMETRIC MAPS



Available on
App Store



Available on
Google Play

Version of June 2020

SOMMAIRE

1.	GENERALITY	3
2.	DOWNLOAD AND INSTALLATION OF THE APPLICATION.....	3
3.	ACCOUNT OPENING	3
4.	ACCOUNT CLOSURE	4
5.	CONFIDENTIALITY	4
6.	FONCTIONALITIES.....	4

6.1.	MENUS	5
6.1.1.	MY PROFILE.....	5
6.1.2.	My maps	5
6.1.3.	MAP LEGEND	6
6.1.4.	My level	6
6.1.5.	MY SPOTS	7
6.1.6.	MY FRIENDS	7
6.1.7.	SOS ALERT	7
6.1.8.	MESSAGING	7
6.1.1.	INSTRUCTION FOR USE	8
6.1.2.	MY SETTINGS	8
6.1.3.	ABOUT	8
	FILTERS	9
6.2.	LOCK MODE	16
6.3.	FONCTIONALITIES.....	16
6.3.1.	WEATHER.....	16
6.3.2.	POST	18
6.3.3.	ANCHOR.....	19
6.3.4.	RECORD YOUR ROUTE	19
6.3.1.	MEASURE	20

1. GENERALITY

Posidonia (*Posidonia oceanica* (L.) Delile) is a protected flowering plant that lives only in the Mediterranean Sea (endemic species). In France, the meadows it constitutes cover 34% of the seabed along the continent and 66% along Corsica between 0 and 40 m deep. In spite of protection measures, **the meadows are threatened by human activities** even though they provide us with many goods and services. In the Mediterranean basin they have lost 10% of their surface area over the last 100 years. In France, the loss in goods and benefits is estimated at more than four billion euros each year.

Boat anchoring are responsible for physical damage to Posidonia meadows, with boat anchors causing irreversible damage. **The larger the ship, the heavier the anchor and the longer the chain.** Impacts on the seabed are therefore likely to be greater by larger ships.

Faced with this observation, Andromède Océanologie created DONIA® in 2013, in partnership with the Rhône Méditerranée Corse Water Agency (Agence de l'eau Rhône Méditerranée Corse). It is a **community application for navigation and anchoring assistance outside fragile ecosystems** such as seagrass beds (Posidonia, Cymodocea, Eelgrass) and coralligenous reefs. **Free download** on Android and Apple stores allows any yachtsman, fisherman, diver or yacht captain to position himself in relation to the nature of the seabed and to anchor outside underwater meadows, **in compliance with the law.** Indeed, *Posidonia oceanica* benefits from legal protection in many Mediterranean countries, including France. **A regulatory framework defining the conditions for anchoring and stopping ships off the French coast has been drawn up through a framework decree of the Maritime Prefect n°123/2019 ([arrêté-cadre du préfet maritime n°123/2019](#)).** DONIA® is the simplest and most operational solution to avoid infringements and to protect sea grass beds.

2. DOWNLOAD AND INSTALLATION OF THE APPLICATION

The DONIA application can be downloaded free of charge from the Apple Store (IOS) and Google Play (Android) platforms. It is available and usable with a smartphone or a tablet. It uses the phone's internal GPS to locate your boat.

DONIA works off 3G or WIFI connection except for map downloads and for community functions.



3. ACCOUNT OPENING



Once the Donia application is installed, you can create your account:

- Open the DONIA application on your smartphone or tablet ;
- Create your account by entering the requested login information (login, email address, etc.) ;
- Validate the Terms and Conditions of Use (you can consult them by clicking on the "About / Terms and Conditions of Use" menu);
- Validate the following message: "No official hydrographic service has verified the information contained in this document and cannot be held responsible for the accuracy of its reproduction or any subsequent modification. Possession of this derivative does not exempt the user from the obligation to use the appropriate nautical documents provided for by national or international regulations. This applies to all data contained in the DONIA application. » ;
- Validate your registration;

Follow the instructions for use to discover the application (you can review them at any time in the dedicated menu on the application (My Profile/instructions) as well as on the [website](#).

4. ACCOUNT CLOSURE

To delete your DONIA user account, send a message to donia@andromede-ocean.com indicating your last name, first name, e-mail address. Any deletion is final.

The following data is kept for the entire time the user is registered on the DONIA platform, i.e. until he or she unsubscribes: user profiles, user sharing functionalities, user registration and identification, processing related to the maintenance of the application.

5. CONFIDENTIALITY

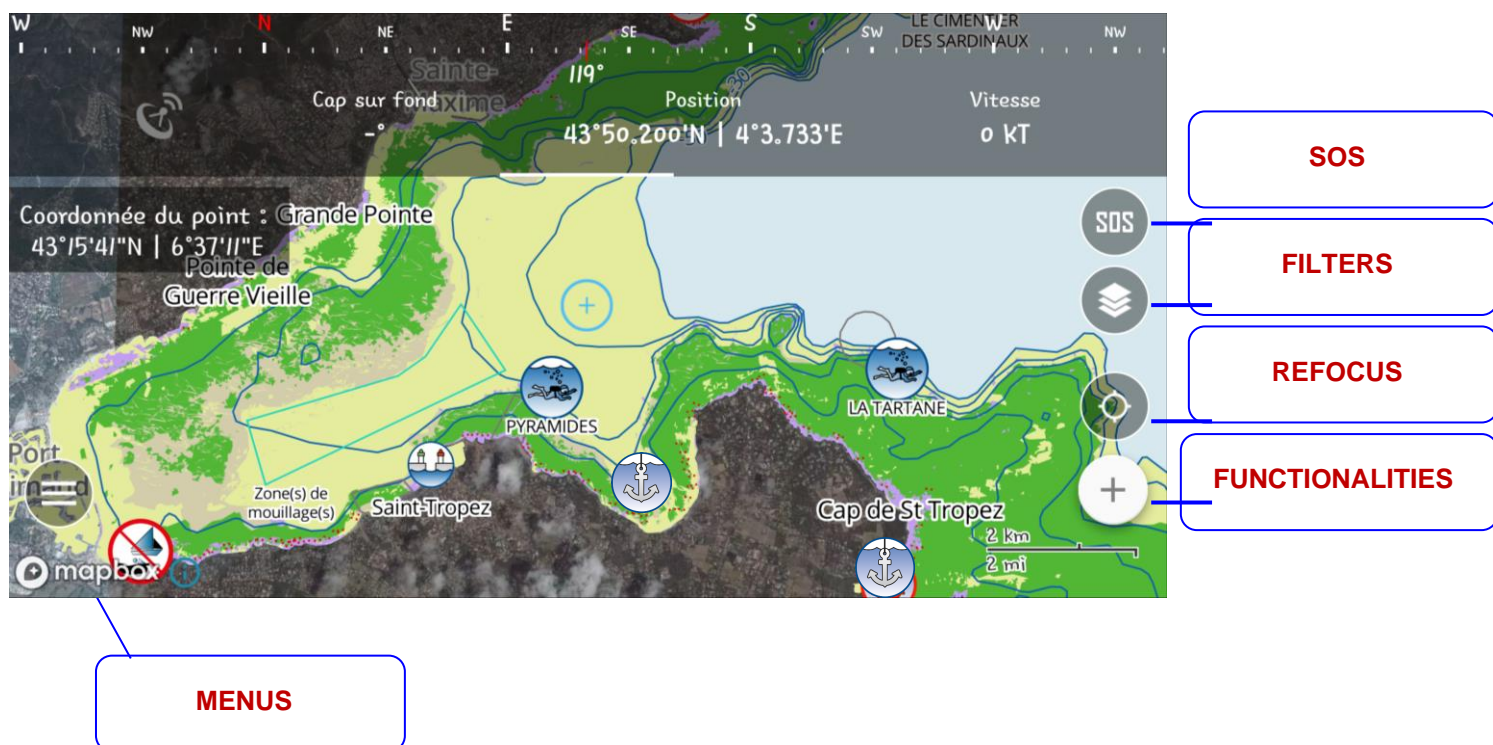
To configure your user account in invisible mode, go to the Menu - My profile - then check "Become Invisible". This activation allows you to :

- Not to appear on the map anymore,
- Not to be contacted by other users including your friends (see 6.1.6),
- stop using the community functions.

You will be visible again the next time you open the application. This data relating to the location of users for navigation and marine activities is kept for the duration of each connection of the user who uses the geolocation service. When the user is no longer logged on to the application, his or her location data are not known; however, all his or her previous location data for navigation and marine activities are kept for an unlimited period of time by applying an anonymisation process.

6. FONCTIONALITIES

Several buttons are available on the main screen: Menus, Community, Refocus, Filters, SOS, Anchoring, Advanced functionalities (Premium version) .

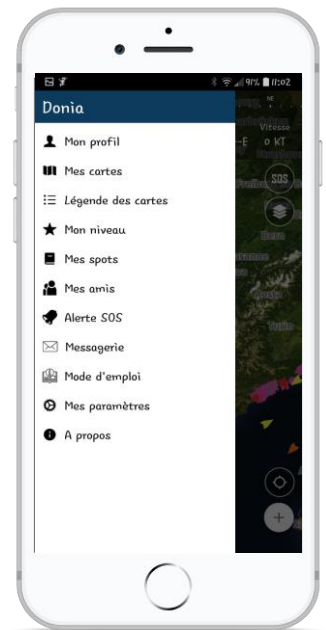


6.1. MENUS



The menu consists of the following tabs:

My profile - My maps - Map legend - My level - My logbook - My spots - My friends - SOS alerts - Messaging - How to use - My settings - About.



6.1.1. MY PROFILE

In "**My Profile**", you manage your personal data :

- Your boat model (catamaran, sailboat, yacht, etc.), name and length
- Your username (it will be used for your publications) and email address
- Your personal data (home port, activity)
- The possibility of "Becoming invisible" (see Privacy)
- The number of your subscription code for those who have a "Company" license (<http://www.donia.fr/prices>).
- The possibility to "Become invisible" (see Confidentiality).
-

You can retrieve our personal data by e-mail.







6.1.2. My maps

In "**My Maps**", you can download the navigation areas you want to use offline. If you are subscribed to the **Premium version** you also have the possibility to download the SHOM maps of the corresponding area. Simply position the map on the screen on the desired area(s) and do not exit the application during the download (which may take a few minutes). A tab allows you to view all the downloaded areas, update them and delete them.



6.1.3. MAP LEGEND

Habitats Marins

	Herbier
	Sable
	Matte morte
	Roche
	Sec rocheux
	Isobathes

In "**Map Legend**", you will find the colour code of the marine habitats:

- Yellow = Sand
- Green = seagrass beds
- Brown = Dead Matte
- Violet = Rock

Rocky pinnacles and isobaths are also indicated.

Thanks to these data, you will be able to anchor safely, while protecting the environment.


Legends of particular sites, AIS data, and regulations at sea are also shown.

6.1.4. My level

In "**My Level**", you will have the opportunity to move up through the ranks of sailor, each rank requires you to perform a number of actions in the application to reach the next level:

Grades	Passage au grade suivant
Mousse	Temps d'utilisation : 5 min
	Nombre de mouillages : 1
	Nombre de posts : 1
	Version: basique
Mataf	Temps d'utilisation : 30 min
	Nombre de mouillages : 2
	Nombre de posts : 2
	Version: basique
Gabier	Temps d'utilisation : 60 min
	Nombre de mouillages : 5
	Nombre de posts : 5
	Version: basique
Chéqua	Temps d'utilisation : 120 min
	Nombre de mouillages : 10
	Nombre de posts : 10
	Version: basique
Bosco	Temps d'utilisation : 300 min
	Nombre de mouillages : 20
	Nombre de posts : 25
	Version: 5 jours Premium offerts
Loufiat	Temps d'utilisation : 600 min
	Nombre de mouillages : 30
	Nombre de posts : 50
	Version: Premium
Pacha	Temps d'utilisation : 1440 min
	Nombre de mouillages : 50
	Nombre de posts : 75
	Version: Premium
Amiral	Dernier rang

< Mon niveau



Mousse Mataf Gabier Chéqua



Bosco Loufiat Pacha Amiral

Le mousse est le surnom donné au matelot de deuxième classe, c'est-à-dire aux apprentis marins. Le mot vient de l'espagnol mozo ou du catalan mosso, qui signifie jeune garçon. Le mousse est chargé des corvées. Au terme de ses classes, le mousse reçoit le brevet d'équipage et devient matelot breveté.

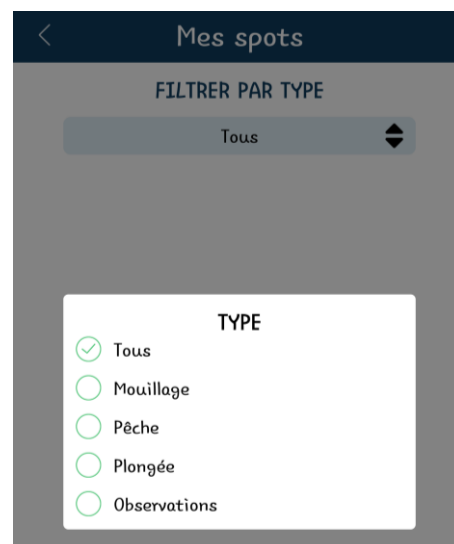
6.1.5. MY SPOTS

In "**My spots**", you have access to the data of your observations or your spots.

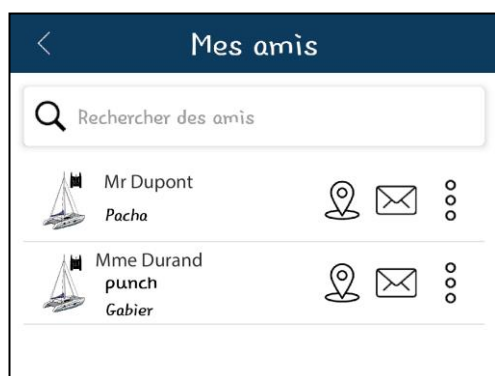
As soon as you share an observation-information, it is directly added to your logbook in the corresponding category and type: Anchoring, Fishing, Diving, Observations, Waypoint .

You can thus easily find your publications, review your photos, GPS coordinates, as well as the rating you gave to this spot.

Thanks to this system, you will be able to easily return to your favourite fishing, diving or boating spot.



6.1.6. MY FRIENDS



In "**My Friends**", you can search for friends, view pending friend requests and access your friends list. At any time, you can delete or block any of our friends.

By clicking on one of your friends, you can locate them and easily find them at sea, and/or contact them through the application's email.

6.1.7. SOS ALERT

In "**SOS Alert**" you can view alerts nearby.

To send an SOS alert to all connected users of the application within a 20 km radius of your position, click on the SOS button at the top of the screen on the navigation bar which shows the heading, speed and GPS position.

You can write your alert message and note down your phone number. To the left of this navigation bar is displayed the signal strength from red to green.

6.1.8. MESSAGING

Find in "**Messaging**" all your conversations with the community.

6.1.1. INSTRUCTION FOR USE

Download these instructions for use here.

6.1.2. MY SETTINGS

In "**My settings**", you can change the language of the application (French, English, Italian, Spanish, Greek). You can also view your GPS data, signal reception quality, heading and speed.

The " Prediction Arrow " tool allows you to calculate and display in real time the user's predicted position in 1 hour based on his speed and heading. This display is done by adding a prediction line on the map. It can be set to display the user's predicted position in 10-minute or 30-minute increments.

Mes paramètres

Général

Langue Français

Version 4.05

GPS

Qualité 1000000m

Latitude --°--',--N'

Longitude --°--',--E'

Cap --°'

Vitesse --N'

Flèche de prédiction

☒ Activer la flèche de prédiction

Type d'affichage ☐ 10 minutes ☒ 30 minutes

Confidentialité

Comptes bloqués >

6.1.3. ABOUT

A propos

DONIA CRÉDITS CGV / CGU

Donia : Enjoy & protect the sea, together.

La mer, c'est beaucoup plus que de simples lignes isobathes sur une carte blanche. C'est un milieu sans cesse changeant, fragile, et qu'il n'est pas si simple d'appréhender. Pour

The "**About**" menu allows you to access three tabs:

- In " DONIA ", you can access more information about the application, Andromède océanologie, and the Posidonia meadows;
- In "Credits", you will find information about the application, the cartographic data and the publishing company Andromède Océanologie,
- In " TCS/TCU", you can read the information regarding Donia's general conditions of use and sale that you accepted when you registered.

FILTERS



This button allows you to display / un-display about fifteen layers that are visible on your map. Most of them are available on the basic version of the application, the others are only available with the Premium version of DONIA (in red below).

Background: Satellite Images, Underwater Ecosystems, Points of Interest, Regulations at sea

My Bathymetry: Depth lines (Isobaths), **SHOM maps**, **HD Bathymetry**

Enrich my map: Harbours, Anchoring, Dive sites, User comments Donia, Underwater photography

My boats: DONIA boats, **AIS boats**, **My community**



Background



- **Satellites images:** The user can choose to display the satellite images in the background map;



- **Marine ecosystems:** The maps available in DONIA® show the distribution of habitats (seagrass beds, Dead Matte, Rock) between the surface and 50 meters deep. They correspond to the latest data updated by Andromède Océanologie in the framework of recent studies, but it is possible that errors remain or that the location of habitats has evolved over time. Do not hesitate to contact us at donia@andromede-ocean.com with the GPS coordinates (or screenshot).



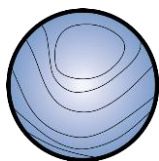
- **Points of interest :** this layer shows the names of the capes, and points of interest along the coastline such as the Genoese towers in Corsica.



- **Regulations :** this layer includes restricted areas for anchoring, diving, navigation; anchorage and/or anchor-release areas; marine protected areas (parks and marine reserves); no-take zones and areas of enhanced protection; fishing lodges; areas prohibited for fishing, spearfishing, traffic, anchoring, diving:



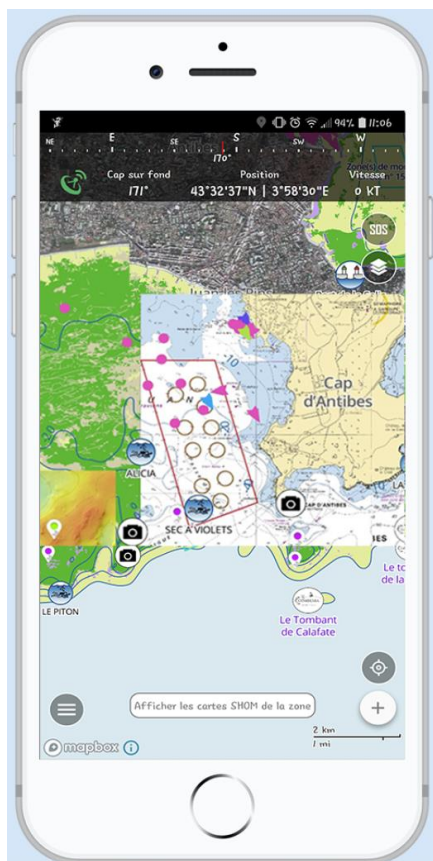
My Bathymetry



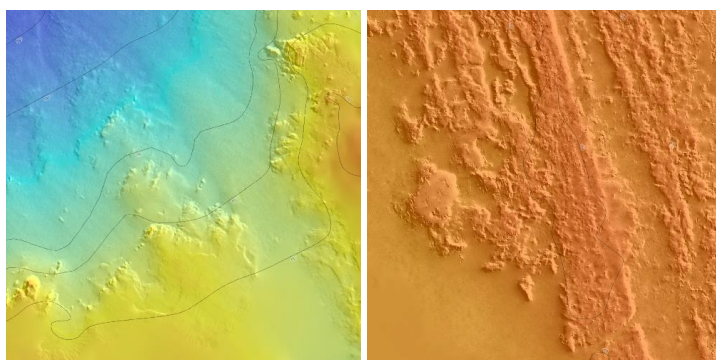
- **Depth lines:** the depth curves (isobaths) are visible down to -50 meters. Rocky pinnacles, identified from the SHOM data, are displayed on the map;



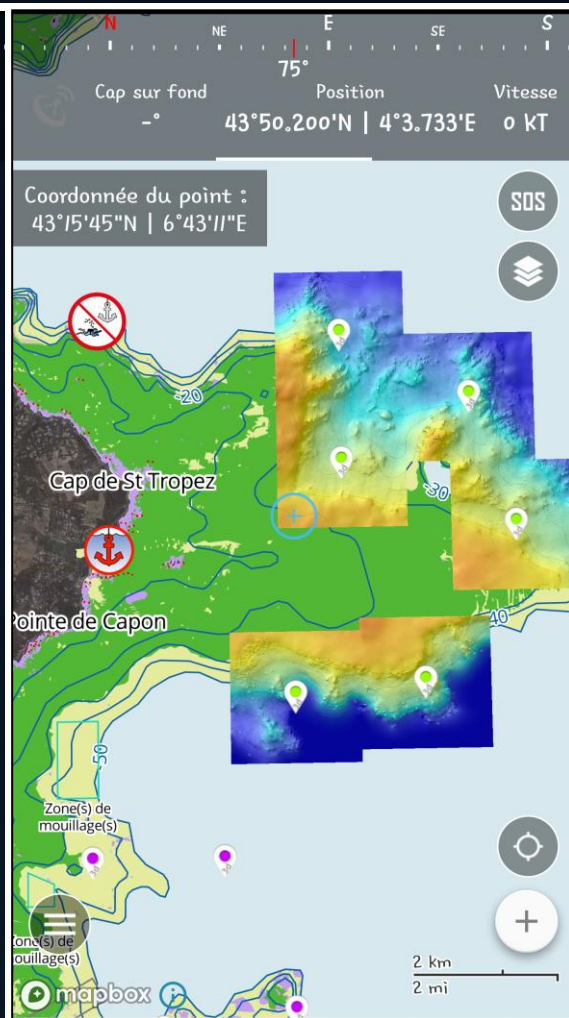
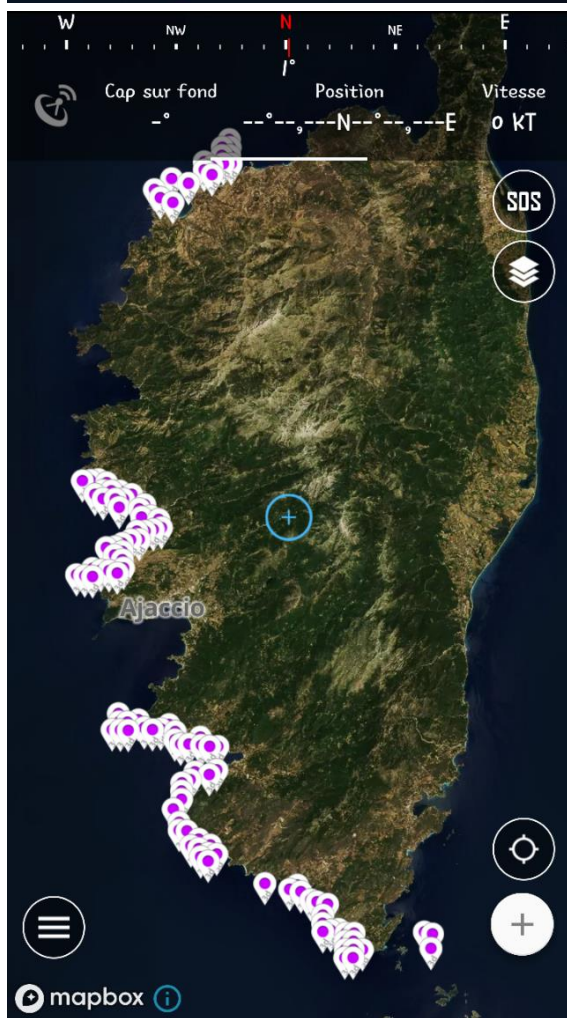
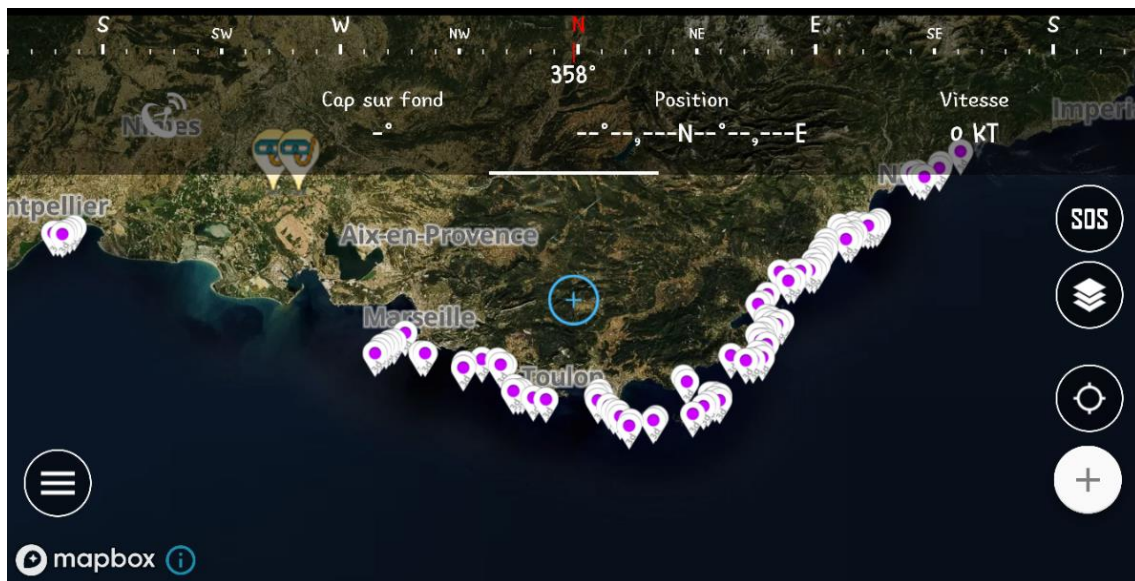
- **SHOM maps:** This is a functionality available in the Premium version of DONIA. SHOM (Hydrographic and Oceanographic Service of the French Navy) nautical charts are available throughout the French Mediterranean.



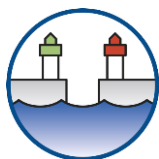
- **HD bathymetry:** This is a functionality available in the Premium version of DONIA. This button allows to display on the map the location of high-resolution 3D bathymetric maps to find new points of interest.



230 bathymetric squares are located in the PACA region between Marseille and Nice, and in Corsica (West and South); some squares are present in the North of Corsica and in the Occitanie region (see following maps).



Enrich my map



➤ Harbours and Organised Anchorage Areas (OAA):

180 harbours are displayed on the map. You can click on the harbour, call it or contact it by e-mail, as well as get a brief description of it and the main services (WC, showers, laundry and WIFI). The "Consult" button gives you access to a complete port description (telephone and e-mail from the harbour master's office, description of the harbour, VHF channel, languages spoken etc.).



30 OAAs are displayed on the map. You can click on the OAA and obtain information such as the capacity, number of visitor places etc.

< Cargèse

Cargèse

[Site web](#)

Adresse	Port de Cargèse 20130 Cargèse
Téléphone de la capitainerie	04 95 26 47 24
Canal VHF	9
Horaire capitainerie été	Du 1er juin au 30 septembre : 8h-19h30
Horaire capitainerie hiver	9h-12h, 15h-18h
Langues parlées	English, Italiano
Longitude	8.5977
Latitude	42.1313

Capacité d'accueil

Places résidents sur pontons	200
Place visiteurs sur pontons	35 (< 20 m)
Ponton d'accueil	Quai d'accueil n° 1, quai d'Honneur

Conditions d'accès et d'amarrage

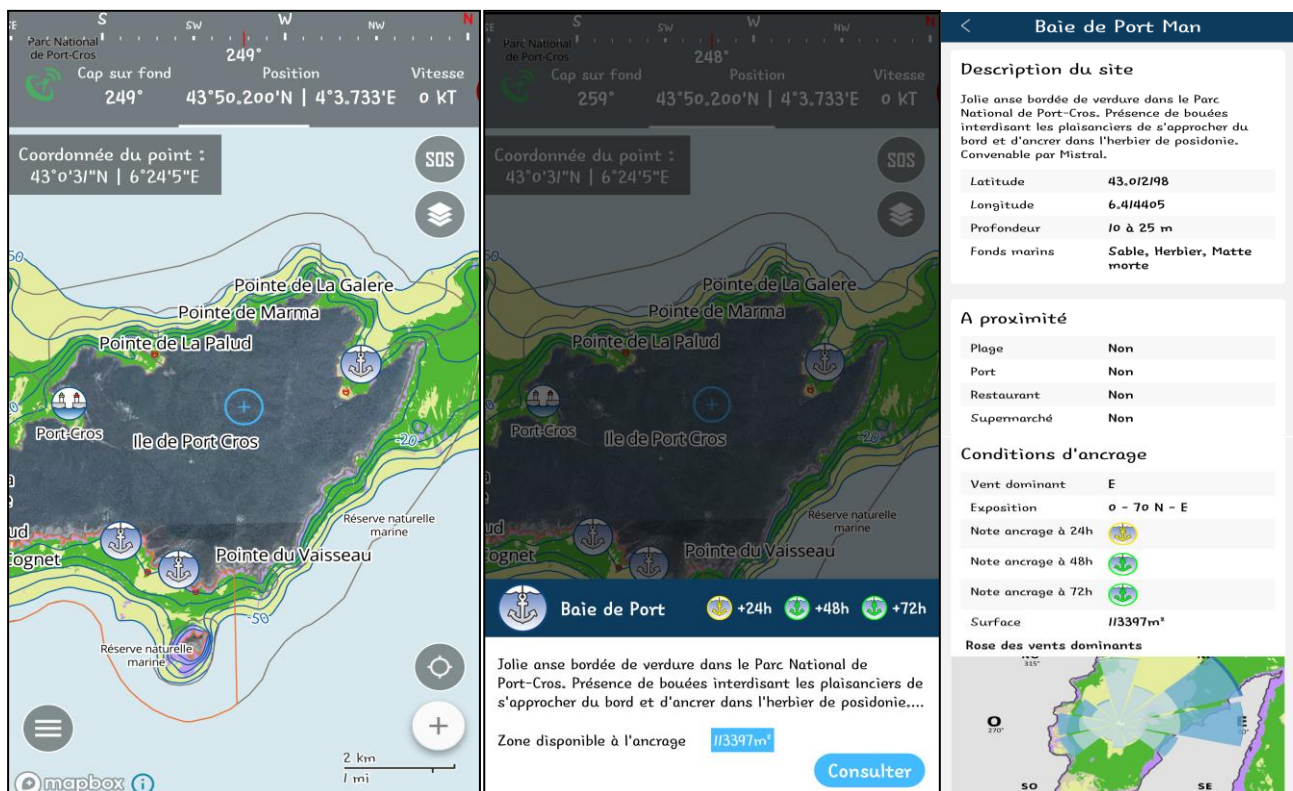
Profondeur	Av.-port 5 m, Bassin 3 m
Amarrage	Appontements flottants interdits pour voiliers, étrave à quai et pendille pour le passage. Pas de place la nuit pour les catamarans en juillet-août.
Mouillage	Forain en rade, au N de l'entrée. Fonds d'au moins 6 m, roches, bonne tenue.

Petit port de pêche et de plaisance situé dans la partie nord-ouest de la baie de Sagone, bien protégé par un môle de 200 m, orienté à l'est

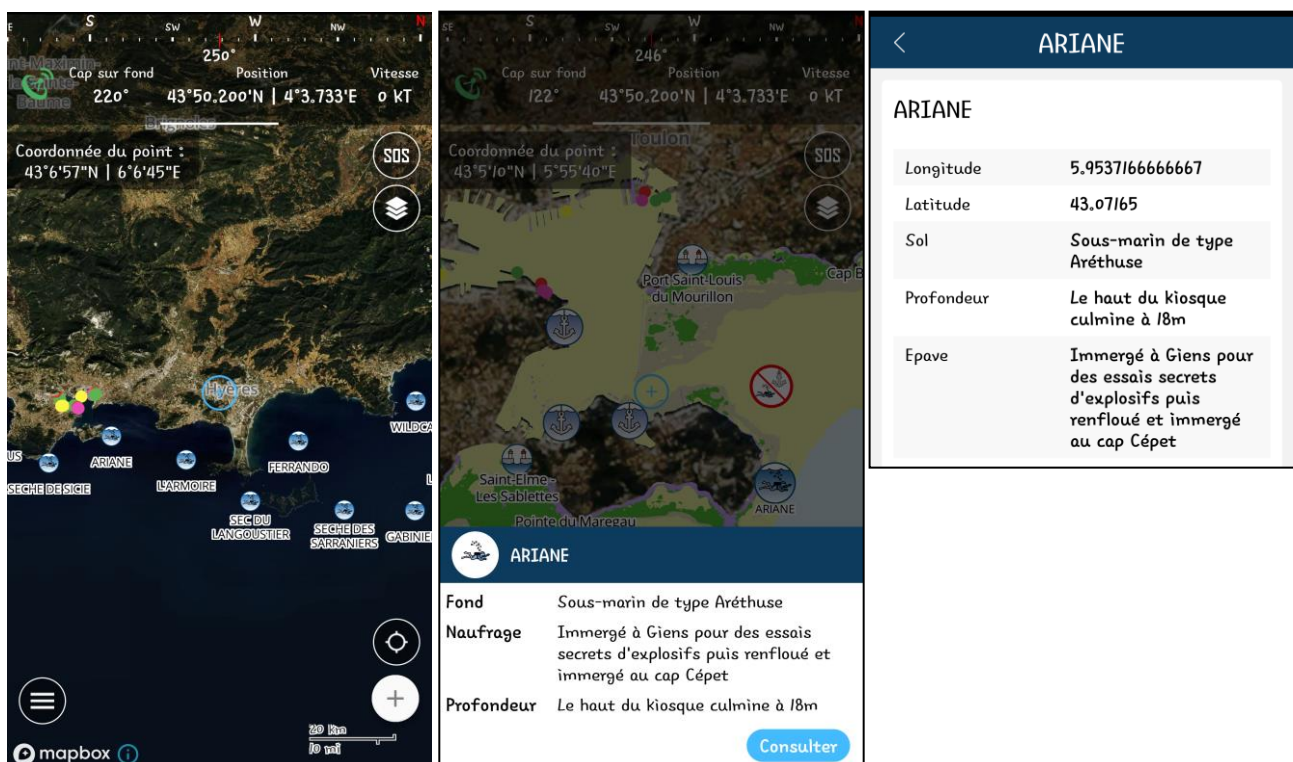
[Consulter](#)



➤ **Anchoring:** 400 anchoring areas have been targeted on a sandy bottom along the French Mediterranean coast. You can click on the anchorage area and obtain information such as the description of the site, the available area (in m²), photographs, nearby services (beach, port, restaurant, supplies) and the anchorage conditions in relation to the weather. The 24, 48 and 72-hour wind and swell forecasts make it possible to classify the anchorage area as sheltered (green), subject to wind and/or swell (yellow) and exposed (red).



- **Dive sites : 330 dive sites** are displayed on the map. You can click on the site and get the following information: name of the site, nature of the seabed, characteristics of the wreck, wreck boat, type of substrate and depth.





- **Underwater photography:** Hundreds of georeferenced photos are available. These underwater landscapes and species are illustrated by Laurent Ballesta. You have the possibility to view the photos in small or large format.

Cap sur fond 246° Position Vitesse 0 KT

Coordonnée du point : 43°7'45"N | 5°31'35"E

Cassis La Ciotat Les Vie

Chretienne!

Date 18/09/2012

Profondeur 70

Galerie Cliquez pour voir le diaporama

Centre_Cassidaigne

Date 28/05/2016

Profondeur 74

Galerie Cliquez pour voir le diaporama



- **Observations:** All observations shared by the community (6.1.5 My Spots).

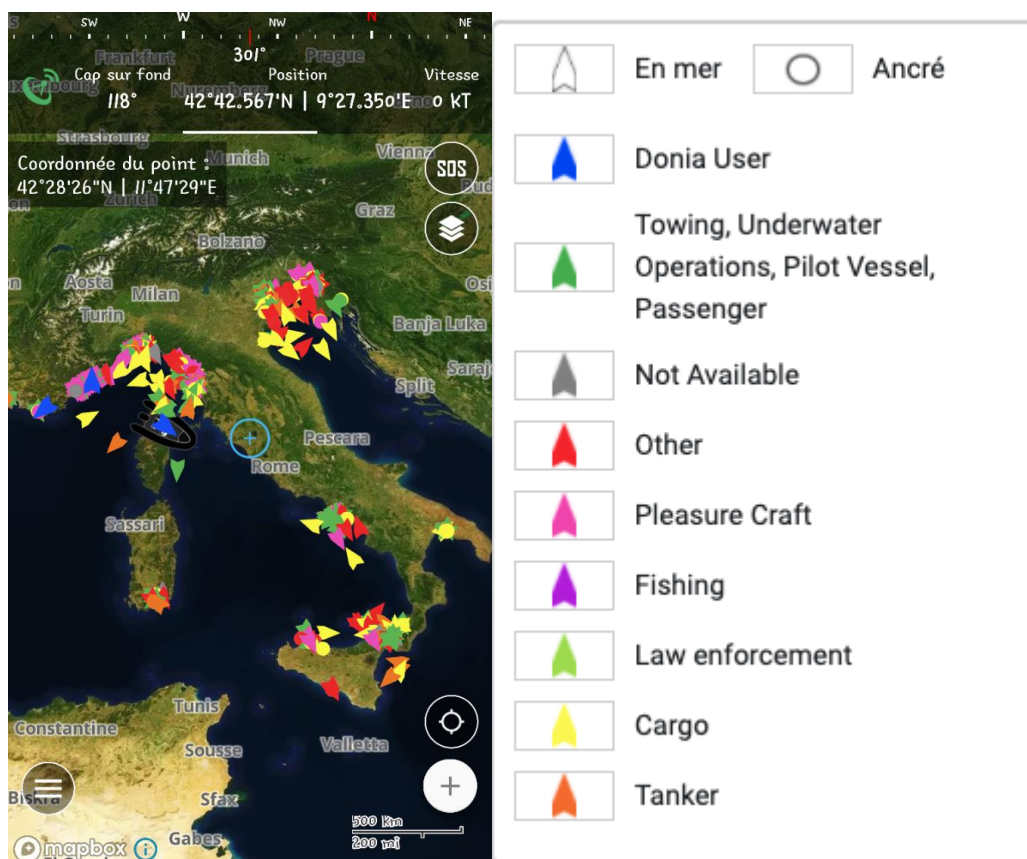
My boats



- **DONIA boats:** You can display all users of the DONIA application who are logged on in real time.



- **AIS boats:** You can display all boats equipped with AIS (Automatic Identification System), differentiating between those at sea or at anchor and the different types of boats (legend below). The AIS data comes from the AISHub network (<http://www.aishub.net/coverage>).



Clicking on a boat gives the following information: Latitude, Longitude, Registration (MMSI), Date and Time, Speed (SOG), Boat Type, Status, Length:

MONICA	
Latitude	43°31'32"N
Longitude	6°56'54"E
MMSI	227442110
TIME	2020-01-10 16:29:09 GMT
SOG	0.1
TYPE	Pleasure craft
STATUS	Underway
LENGTH	0



- **My Community:** This feature is reserved for premium business users only. It allows them to display all the boats in their community.

6.2. LOCK MODE

This button allows you to activate the lock mode to keep your vessel in the center of the map while navigating.



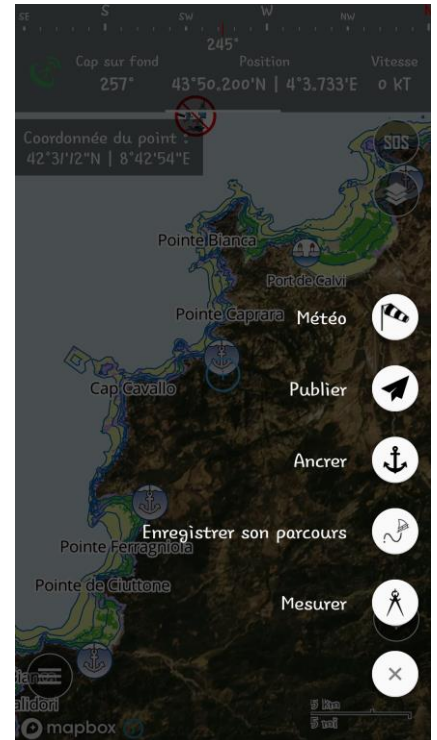
6.3. FONCTIONALITIES



The + button (advanced functionalities) gives access to the basic functionalities (Post / Anchor) of the application.



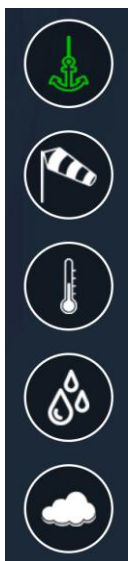
Some advanced features (Weather, Record your route, Measure) are only available in the Premium version (paid).



6.3.1. WEATHER

The "**Weather**" button is a feature available in the Premium version of DONIA.

DONIA integrates a French global atmospheric forecast model. These simulations are produced by the ARPEGE numerical forecast model. It integrates one point every 10 km. The forecasts concern the following parameters with a forecast every 3 hours up to h + 72h::



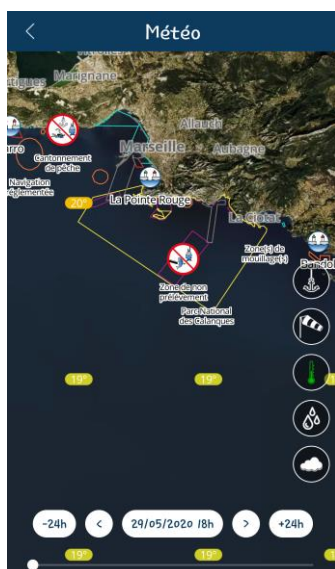
Zone d'ancrage

Vitesse et orientation vent à altitude 0

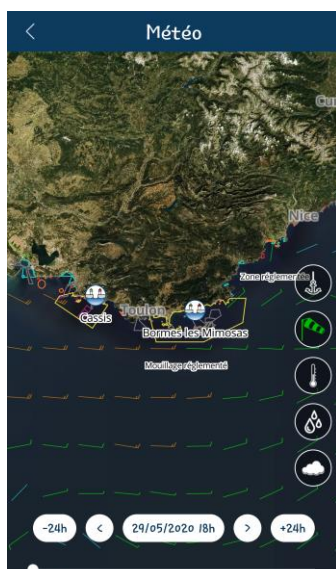
Température

Pluviométrie

Couverture nuageuse



Temperature



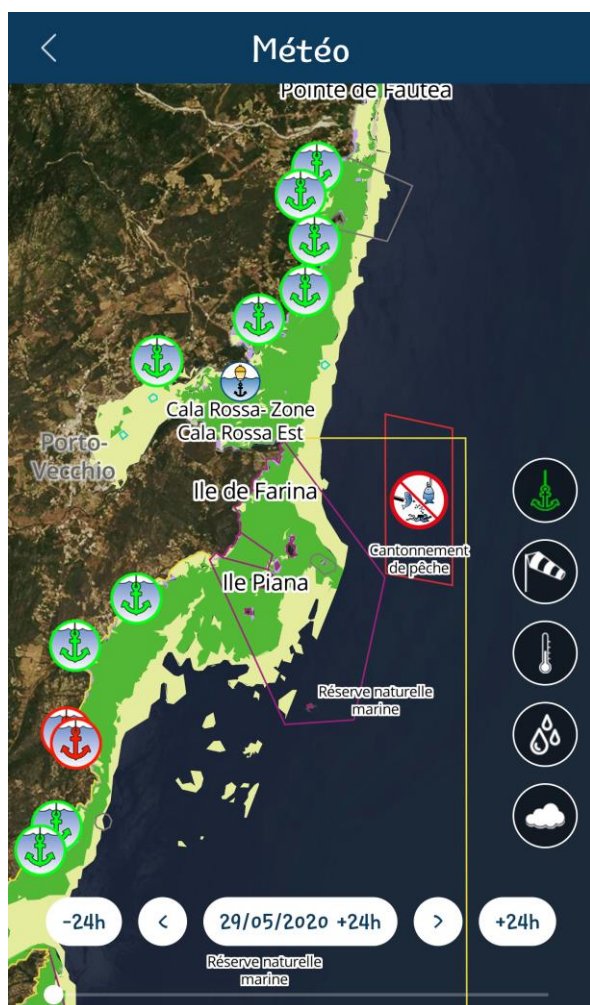
Wind



Rainfall



Cloudy cover



The 24, 48 and 72-hour wind and swell forecasts make it possible to classify anchoring areas as sheltered (green), subject to wind and/or swell (yellow) or exposed (red).



Zone d'ancrage abritée



Zone d'ancrage soumise au vent et/ou à la houle



Zone d'ancrage exposée



Pampelonne



+24h



+48h



+72h

Zone de mouillage très prisée en période estivale. Bonne tenue de l'ancre sur un fond sableux. Attention à l'herbier de posidonie qui est très abîmé à cause de la pression de ...

Zone disponible à l'ancrage

124/433m²

Consulter

6.3.2. POST

When you click on the "POST" button, you can post your comments (shared spots) to the community.

You just have to select the type of observation you want to share (diving, fishing, anchoring, danger, biodiversity, pollution, weather, waypoint).

Cap sur Fond 246° Position 43°50.200'N | 4°3.733'E Vitesse 0 KT

Coordonnée du point 42°31'12"N | 8°42'54"E

Pointe Blanca Port de Calvi Pointe Caprera Cap Cavallo

Publier une Observation

Plongée Pêche Mouillage Waypoint

Danger Biodiv. Pollution Météo

Biodiv.

Dauphin Baleine Tortue Raie

Requin Plante Autre esp. Autre

Titre

Validité 3 jours

Positionner le spot 43.226137630579615, 5.010803734960803

Camera icon

Clicking on the icon opens a new window: this is where you fill in a spot by entering title, duration of display (validity), location, photo, message and note. You can choose that your spot is visible by the whole community or only by you.

6.3.3. ANCHOR

The button « **ANCHOR** » allows you to anchor outside of fragile ecosystems. The skid, entanglement and collision alert pack is only available in the Premium version.

An ecological and safe anchorage aid (Premium version) is provided at this stage:



Bateau rouge, impact fort et risqué (mouillage sur l'herbier)



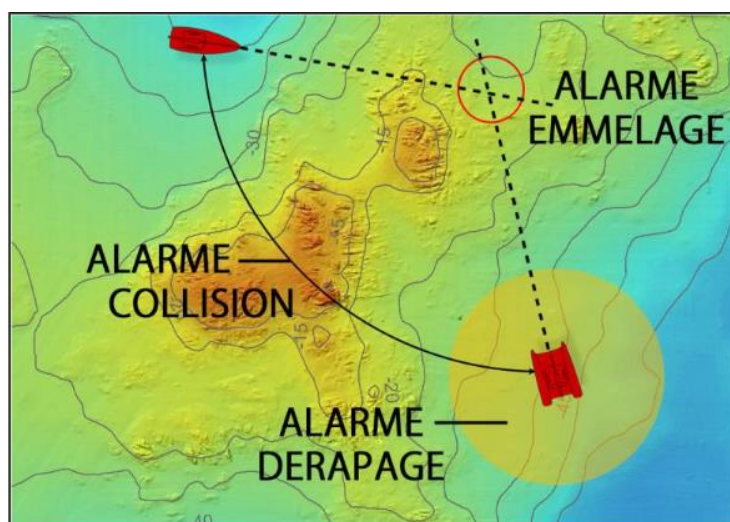
Bateau orange, impact moyen (mouillage sur la matie ou les roches)



Bateau vert, votre impact est faible et plus sûr (mouillage sur le sable)



Bateau noir, substrat non connu sous votre bateau



<input checked="" type="checkbox"/>	Dérapiage	<input checked="" type="checkbox"/>	Emmêlage	<input checked="" type="checkbox"/>	Collision
Dérapiage	<input type="range"/>				50m
Collision	<input type="range"/>				50m



An alert pack is only available in the Premium version in the "Anchor" Menu. You can activate the skid, entanglement and collision alarms for added safety. You can set the distance for which you want to be warned of a skid or collision risk up to 50 metres.

For example, if you activate the collision alert at 50 metres and another Donia boat enters the area, then an alarm will sound. If the boat leaves the area, the alarm will automatically stop.

You can activate an e-mail alert for these alarms, provided you have an internet connection.

6.3.4. RECORD YOUR ROUTE



The button « **Record your route** » is a functionality available in the Premium version of DONIA.

The user has a button to start and stop the recording of his route. After recording, the track is colored in a gradation from green to red representing the user's speed on this track (the more red the section is, the closer the

user was to his maximum speed on the track). The information concerning the duration, distance, average speed, maximum speed of the route are displayed in real time. The boat's track is also displayed in real time on the map.

6.3.1. MEASURE



The button « **Measure** » is a functionality available in the Premium version of DONIA.

The user can dynamically add points on the map and measure the distance and course between these points. Possibility to manipulate (drag and drop or delete) already existing points, delete all points or remove the last added point, calculate the total distance of the measurement.

